



Winter 2024 President's Letter

As sculptors, we pride ourselves on our facility with our tools – we carve, model, mold, pour, assemble, weld and yes, we also fabricate. We fabricate tangible creations – sculptures that can enhance a public space, engage the intellect and emotions, and provide aesthetic enjoyment. We don't fabricate art to deceive our audiences or lie to our communities, but instead to represent the creative spirit in physical form. This is what Philadelphia Sculptors believes in, and we hope that over the past year we have provided both our artists and our public with artwork that is authentic, sincere, and even if it is funny or whimsical, speaks truth from the heart.

January 2023 was the final month of our *Lit* exhibition in the Kramer Hall Galleries in Hammonton, NJ. Over the following months, we siphoned off the positive energy from that show to help us plan and implement all the projects we envisioned for the rest of the year. In early June, it felt like a reunion as we returned after too long a hiatus to Moore College of Art & Design for this year's *5 into 1*. The ten graduating sculpture students from five area colleges selected by our discerning curatorial team presented timely and original work that reflected mature exploration of themes as well as innovative uses of materials. As opposed to other years where the exhibition was only on display for a few weeks, Moore allowed the exhibition to stay in place for the entire summer.

Summer continued to be a productive time as we launched our collaborative exhibition *Depth of Field* in the PL130 Gallery at PhotoLounge during August and September. Eighteen artists from Philadelphia and beyond rose to the challenge of finding unique ways to combine sculpture with photography. We struggled to picture what forms this artwork would take, but the surprising and unexpected results allayed any doubts we might have had about the powers of the imagination.

Our creative efforts expanded past the making of art to the searching for locations to exhibit it. We had been looking for new venues which could serve for short-term pop-up exhibitions. Our quest turned up a space in a new medical facility that was already being used for temporary art exhibitions. We transformed an empty physical therapy clinic into an art gallery for *PS on the Ridge* during the month of October, allowing our 17 artists to participate in the 2023 Philadelphia Open Studios Tour.



Kim Knauer
Freda

Table of Contents

Letter from the President	1
Member News	2,4,7,9
<i>5 into 1</i>	3
<i>Depth of Field</i>	5
<i>Nothing Ventured, Nothing Gained</i>	6
<i>PS on the Ridge</i>	8
<i>Ethel Wallace</i>	10
<i>Between Horizons</i>	10
Resources List	11
Instagram	11
Membership Benefit	12
<i>Holograms</i>	12
ISC Discount	12

Looking forward, we are very excited about our plans for 2024. The year is jumping off with our participation in the city-wide project *(re) FOCUS 2024* ([re\)FOCUS 2024 \(refocus2024.org\)](https://refocus2024.org). In early winter, five artists will be creating exuberant storefronts in Old City for [PS: The Artfront Partnership — Philadelphia Sculptors \(philasculptors.org\)](https://psartfront.org). Details will follow soon! We are also currently working hard in collaboration with the National Liberty Museum for *Becoming America* which will be on view from May through October. A major investigation into the experience of American democracy and its inequities by seven artists of different ethnic and cultural heritages, we expect the exhibition to attract significant attention throughout Philadelphia and the region.

Our annual *5 into 1* exhibition will return to Moore College of Art & Design in early June and *Pushing Buttons*, an exhibition of indoor and outdoor art in collaboration with Tri-State Sculptors, will take place at Montgomery County Community College in August and September, just in time for the elections. 2024 is going to be a memorable year for the country, and we plan to be a big part of that. We value your support and hope you will join us as we show the novel perspectives that art provides in viewing and understanding the times in which we live.

Leslie Kaufman

MEMBER NEWS

John Costanza had an exhibition and auction of his work in conjunction with the Hedgerow Theater's 100th anniversary on April 29th. His ink drawings and watercolors were inspired by the production of Eugene O'Neil's play, *The Iceman Cometh*, as performed at Hedgerow in 1970. Wallingford, PA. He was invited to show his work in the *Betsy Meyer Memorial Exhibition 20th Anniversary Retrospective*, Main Line Art Center, Haverford, PA, November 10, 2023 – February 17, 2024.

[Home](#) | [Johncostanzaart](#)



John Costanza
El Salvador

Michael Dela Dika's solo museum exhibition *Shaping Rhapsody* was at Berman Museum of Art, Collegeville, PA. January 20 – May 12. It was a collaborative undertaking by student curators in the Berman's 2022-Museum Studies Curatorial Practices Seminar. Also, it was featured in the International Art Publication and Magazine, *Ceramics Now*. The National Council On Education for the Ceramic Arts featured Michael Dela Dika's collaboration within the Ghana-American Exchange, a critical panel discussion focused on global access to clay materials and technology in their annual catalog, *2023 NCECA Journal Volume 43*. His work was included in *CMCS#3*, a selection of contemporary ceramics, Galerie Zwart Huis, Brussels, Belgium.

In 2024 his work will be in the *Multicultural Fellowship Exhibition*, The Black History Museum and Cultural Center of Virginia, Richmond, VA. He was invited to show his work in the 2024 NCECA Annual *Rendered Fusion: Clay, Connection, Attention*, the University of Richmond Museum, Richmond, VA, January 31 - May 4, 2024.

[Michael Dela Dika: Shaping Rhapsody at Berman Museum, Collegeville - Ceramics Now](#)

[Exhibitions - Black History Museum 2022](#)

[Exhibitions - University Museums - University of Richmond](#)

[Michael Dela Dika \(@mcmichaeldika\) • Instagram photos and videos](#)



Michael Dela Dika
Field Formation

Morgan Hobbes' solo show, *Chronolith* was at the Gross McCleaf Gallery, Philadelphia, PA, November 16 - December 23.

<https://www.grossmccleaf.com/exhibitions/morgan-hobbs#tab:thumbnails>



Morgan Hobbes
Brick By Brick

Harold Kalmus's work was included in *The Figure: Light, Form and Motion* at Cerulean Arts, Philadelphia, PA, March 29 - April 23. He was the sole sculptor exhibiting in the curated show, *Group Figuration*, Chris White Gallery, Wilmington, DE, November 7 – January 5, 2024. His handcrafted knives were on view at *The Philadelphia Museum of Art Contemporary Craft Show*, Pennsylvania Convention Center, Philadelphia, PA, November 2 - 5.

[Harold Kalmus, realist figure sculpture, portraits and reliefs](#)

[Kalmus Knives - Hand Crafted Knives Culinary Knives](#)



Monica Kane
Reef

Monica Kane's work was included in *The Calm Before the Storm: 2023 CFEVA Members Exhibition*, CFEVA Gallery, Philadelphia, PA, May 24 – July 28.

[Monica Kane - Mixed media sculpture/constructions \(monicakaneart.com\)](#)



Harold Kalmus
Lift.Rise



Artists and curators



Lily Scharff



Kelly Lawler

Philadelphia Sculptors' twenty-third year of *5 into 1* highlighted the achievements and artistic merit of selected artists from five Philadelphia colleges and universities. The exhibition took place at Moore College of Art and Design in the Wilson Gallery, June 3 through September 2, 2023, with a public reception on June 3rd.



Tori Schwartz



Julio Galvez

Curators Patrick Cabry, Chenlin Cai, Mandi Hall, Jacintha Kruc, Sherry Rossini, and Jaymi Vilardo selected works from departments not solely dedicated to sculpture, focusing on students who choose to work in a way that promotes sculptural thinking and movement.

The artists were Lily Scharff, Moore College of Art & Design; Julio Galvez, Lasha Stewart and Kelly Lawler, Pennsylvania Academy of the Fine Arts; Brynn Hurlstone and Maria Marte, Tyler School of Art; Tori Schwartz, Maple Young and Grace Plett, The University of the Arts; Chenxi Shao, University of Pennsylvania



5 into 1 opening

[23rd Annual 5 into 1 Exhibition — Philadelphia Sculptors](#)



Award Ceremony



Maria Marte

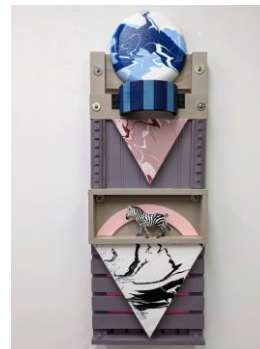


Brynn Hurlstone

MEMBER NEWS (continued)

Jack Knight's *Andromeda Series #52* was included in the *Members Exhibit* at Salisbury Art Space, Salisbury, MD, Jan 13 - Feb.23. He was the guest artist at Main Street Gallery with *The Ontario Series* of mixed media constructions, Cambridge, MD, March 2 – April 30. His work was included in *Space in Art*, Perkins Center for the Arts, Collingswood, NJ, May 1 – June 30. His solo show of mixed media wall constructions, *The Ontario Series*, was at Chris White Gallery, Wilmington, DE, July 28 - September 8. The oil and acrylic painting *Sunnyside #10*, was selected for the July *Members Exhibit* at the Art League of Ocean City, Ocean City, MD. Two wall pieces from *The Ontario Series* were included in the *50th Annual Members' Fine Craft Exhibition*, Rehoboth Art League, Rehoboth MD, June 9 – July 16. *Sausalito #20* was selected for December's *Members Juried Show*, at Art League of Ocean City, MD. *A Look Back*, a solo exhibit of 22 paintings was at The Dover Public Library Art Gallery, Dover, DE, October 29, 2023 - Jan 7, 2024. He will be the featured artist at Huxley & Hiro Booksellers, Wilmington, DE with *Reelin In The Years*, a show of small works, in March 2024. The owner approached Mr. Knight after seeing his work on the Delaware Contemporary website.

[JACK KNIGHT – Artist \(artistjackknight.com\)](http://www.artistjackknight.com)



Jack Knight
Ontario Series # 5



Virginia Maksymowicz
The Lightness of Bearing gallery installation
photo by Constance Mensh

Virginia Maksymowicz's solo show, *The Lightness of Bearing*, was on display at Rowan University Art Gallery, Glassboro, NJ, September 5 - October 28. It was reviewed by Mary Murphy for Philadelphia Artblog.

<https://www.theartblog.org/2023/10/virginia-maksymowicz-and-the-lightness-of-bearing-at-rowan-university-art-gallery/>.

A copy of the catalogue with an essay by Andrea Kirsh can be downloaded here

https://sites.rowan.edu/artgallery/docs/vm_catalog_final_web-file.pdf

And watch a walk-through of the entire exhibition on YouTube <https://www.youtube.com/watch?v=dgnFQPEKQvI&t=262s>

Her work was also included in *Depth of Field*, Photolounge PL130 Gallery, Philadelphia PA, August 7 – September 30.

[Sculpture Installation Art | Virginia Maksymowicz Visual Artist | Philadelphia \(maks-arts.com\)](http://www.maks-arts.com)



Constance McBride
Liminal Space Northeast Forest

Constance McBride's work was included in *The Hook Experiment: Kindred*, a celebration of sisterhood at The Hook, Oxford, PA. On view Dec 1 – 3, it was a 3-day show featuring the work of 12-woman artists from Oxford and surrounding areas.

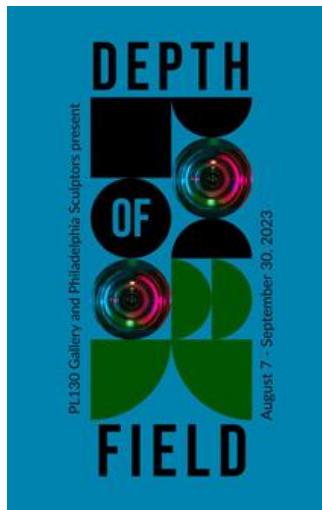
[Constance McBride - Sculptor; Ceramics, Mixed Media, Installations](#)

Joan Menapace's graphic novel, *The Mysterious Sister*, was published in November. Under the pen name Etoile Blanche, she wrote the story and made the drawings, a massive effort which took just thirteen years! It's the story of a little girl and her grandmother who solve a mystery with the help of a teenage boy with superpowers. Pay attention to the characters and clues and you will have a wild time.

<https://store.bookbaby.com/book/the-mysterious-sister>.



Joan Menapace
The Mysterious Sister



Charles Emlen
(video still)



Marcelino Stuhmer and David Meekins



John Groves

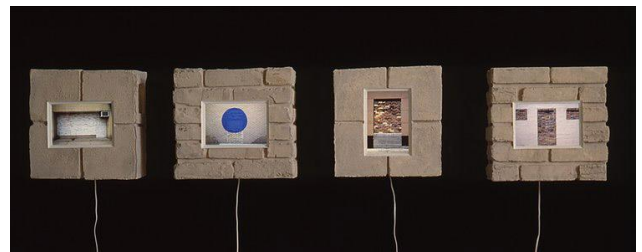
Philadelphia Sculptors and the PL130 Gallery at PhotoLounge collaborated to present *Depth of Field*, a unique exhibition of artworks that combined photography with sculpture. It was on view from August 7 - September 30 at PhotoLounge in Philadelphia, PA. The exhibition celebrated the unexpected and the irreverent as the artists displayed original ways of connecting the two disciplines. The public reception took place on Friday, September 8.

The exhibition of 23 artworks by 18 artists were selected by jurors Lauren Mitchell and Owen Kobasz. The exhibiting artists were: Lindsey Arturo, Kristina Bickford, Charles Emlen, Christopher Evans, John Groves, David Heshmatpour, Kim Knauer, Francesca Lally, George Lorio, Virginia Maksymowicz, Nicole Molnar, Rachel Scheinfelt, Kathran Siegel, Marcelino Stuhmer and Dave Meekins, Blaise Tobia and Dan Loewenstein, and Ruini Yu.

[Depth of Field — Philadelphia Sculptors \(philasculptors.org\)](http://philasculptors.org)



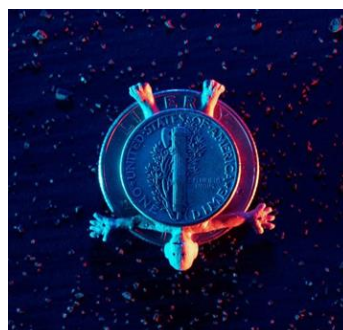
Lindsey Arturo



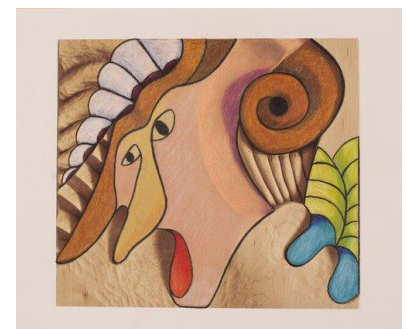
Blaise Tobia



George Lorio



David Heshmatpour



Kathran Siegel

Nothing Ventured, Nothing Gained

by Michael Dela Dika

"In the spirit of 'nothing ventured, nothing gained', I just thought I'd ask." So said a friend in a recent conversation and it is the profoundness of this statement that my artistic practice and being thrives on. I view my life and creative journey as a continual exploration, a tapestry of mark making with clay and the accumulation of recorded experiences. It is a delicate dance of tension and balance, navigating the preciousness of the human condition. A journey between the spaces called home: Ghana and the United States.

Having made the leap in 2019 from Ghana to the United States in pursuit of my MFA at the University of Delaware, the opportunity of being awarded a full scholarship to study and practice art was an exhilarating moment. However, arriving in a foreign land amidst the upheaval of the COVID-19 pandemic brought about its own set of challenges. Uncertainty loomed, and yet it was this very moment that allowed me to fully immerse myself in honing my studio practice. Experimenting with found materials and clay, my work evolved and transformed over time.

Post-MFA, I felt drawn to the thriving art scene in Philadelphia, and despite my initial fears, yearned to be closer to its vibrant community. Conversations with esteemed artists Roberto Lugo and Lauren Sandler helped allay these worries. And now, a year and a half later, I find myself completely enchanted by the city, captivated by the boundless opportunities it offers to artists such as myself. I have new friends and am engaged with many artists.



Just hang there (left) and Field Formation



Fruits of Labour



Currently, as the resident artist/visiting artist at Tyler School of Art and Architecture, my role encompasses both teaching two classes, and developing my personal studio practice. Being awarded this rare opportunity grants me access to expansive studio spaces, abundant materials, and a diverse array of artists spanning various stages of their careers and mediums. I am deeply grateful for this privilege bestowed upon me.

During my residency I have been able to have a number of studio visits, and push the boundaries of scale in my sculptures, all leading to my first museum solo show. I've also been accepted in several other shows, taught a workshop at Grounds for Sculpture, curated an exhibition for the ceramic department at Tyler, and continued my touring curatorial project titled: *The Medium is the Message*, which has traveled to three states thus far, including Philadelphia. I am looking forward to two upcoming museum exhibitions this January and March, at the University of Richmond Museum and the Black History Museum and Cultural Center of Virginia, respectively.

As my time as a resident artist draws to a close, there exists a mixture of nervousness and excitement as I eagerly anticipate what the future holds, once again unsure of where my next residency or opportunity might be. In spirit of 'nothing ventured nothing gained', I hope my next venture is fruitful and bigger than I can currently imagine.

[Michael Dika – Personal website](#)



Traces Beyond the Waves



Marching Vessel 2



Field Formation detail



MEMBER NEWS (continued)

Lisa Nanni's solo show, *Flow*, was at Albright College in the Project Space, Freedman Gallery, Reading, PA, August 29 – October 13. Her artist's virtual lecture was held on September 3, and a brochure of the show was published with a review by Berks County art critic, Ron Schira.

[Lisa E. Nanni \(lisaenanni.com\)](http://lisaenanni.com)



Lisa Nanni
Flow gallery installation

Howard Neifeld was invited to show his work in *Walking Through My Thoughts*, Cerulean Gallery, Philadelphia, PA, November 22, 2022 – January 23, 2023. His work was included in *The 2023 DiStefano Memorial Works on Paper Exhibition*, The Sketch Club, Philadelphia, PA, March 5 – 24. Two of his paintings were in the *80th Annual Juried Painting Show*, Cheltenham Center for the Arts, Cheltenham, PA, April 16 - May 12. He was invited to be in the 4-person show *Blurring the Line*, Cerulean Arts, Philadelphia, PA, September 1 – 24.



Howard Neifeld
Lockjaw

John Parker has work in *The 6th Annual City of Mount Clemens Outdoor Sculpture Exhibition*, Mount Clemens, MI, September 2023-September 30, 2024; the *18th Annual University of Toledo Outdoor Sculpture Exhibition*, Toledo, OH, May 1, 2023-April 15, 2024; *Sculpture Salmagundi XXVII* outdoor juried exhibition, the Maria V. Howard Art Center, Rocky Mount, NC, November 1, 2023 – September 2024; the *2023-24 National Outdoor Sculpture Competition & Exhibition* in North Charleston, SC; and *The Josephine Sculpture Park Expree Exhibition*, Frankfort, KY. His work was in the *6th Annual Moross Greenway Outdoor Sculpture Exhibition*, Detroit-Gross Point, MI; and *Apex Sculpture Walk – 3rd Annual Outdoor Show*, Apex, NC.



John Parker
Die Fledermaus

Caroline Sawyer's piece *Wrapped* was included in Wayne Art Center's *CraftForms 2022, 27th International Juried Exhibition of Contemporary Fine Craft*, Wayne, PA. Her piece, *Summer Day*, won the Juror's Award in Wayne Art Center's *2023 Regional Juried Spring Open Exhibition*, March 27 – April 29. Her installation, *Cloud*, was in the *Nourishing Spaces* exhibit at Knauer Gallery, West Chester, PA., August – October. *Summer Day* was also included in the Abington Art Center *2023 Faculty & Member Show*, Jenkintown, PA, November 10 – December 18. Her work was in *Sculpture Now: Art 2 the 3rd Dimension*, Art League RI Gallery, Pawtucket, RI, December 2, 2023 - January 3, 2024. In the past year she has given talks about her work and process in Albany, NY and Mendham, NJ.



Caroline Sawyer
Cloud



Alysse Einbender

On The Ridge took place during the month of October, at 2077 Ridge Ave., Philadelphia, PA. A display of artworks by 16 PS members, it went from small artworks for the wall or table, to larger works and installations, where the artists showed their skills in all types of media.

Participating artists were: Blue Benet, Patrick Cabry, Alysse Einbender, Charles Emlen, Andrew Fox, L.L. Gross, Cheryl Harper, Brynn Hurlstone, Kim Knauer, Jack Knight, Grace Plett, Tori Schwartz, Blaise Tobia, Jaymi Vilardo, David Wilson, and Maple Young.

The public was invited to meet the artists and learn about their works during POST – Philadelphia Open Studios - on October 21-22. PS is grateful to Xiaoyuan Chen and the Everest Medical Group for their generosity in allowing us to use their space.

[On the Ridge — Philadelphia Sculptors \(philasculptors.org\)](http://philasculptors.org)



L.L. Gross



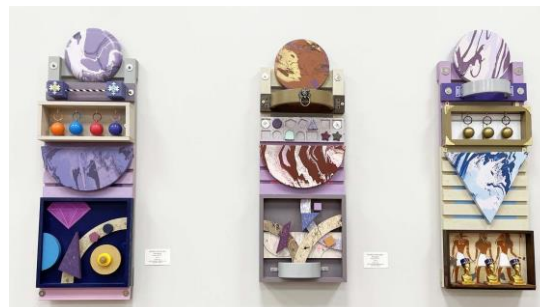
Maple Young



David Wilson



Blue Benet



Jack Knight



Member News (continued)

Rachel Scheinfeldt had five cast bronze sculptures from her *Formal Abstraction Series*, in Dalian on the Park's *Art in the Park Exhibition*, Philadelphia, PA, April 26-27. Her *Formal Abstraction Series #8* was exhibited at PAFA's Anne Bryant Gallery, Philadelphia, PA, June 29- July 23. She had *Formal Abstraction Series #1, #2 and #4* in the online *Peace Love Charity Showcase and Sale*, July 9 – 14. *Formal Abstraction Series #5, #9 and #11* were exhibited in *Depth of Field*, a Philadelphia Sculptors and Gallery PL130 collaboration, PhotoLounge, Philadelphia, PA, August 7-September 30. Her work was reviewed by Lori Waxman, The 60 WRD/MIN Art Critic, and posted on Lori Waxman's website, October 14. It was also featured in *The Philadelphia Citizen*. [The 60 Wrd/Min Art Critic Comes to Philadelphia \(thephiladelphiacitizen.org\)](http://thephiladelphiacitizen.org)



**Rachel Scheinfeldt
Sculpture #8**



**Libbie Soffer
Before Words**

Libbie Soffer's solo show was at the Blue Streak Gallery, Wilmington DE, December 1, 2023 – January 27, 2024. [Libbie Soffer Portfolios](#)



**Simone Spicer
Dancing Shiva on the Demon**

Simone Spicer exhibited her 2 large sculptures, *Kuan Yin Water Moon* and *Dancing Shiva on the Demon*, in *The Philadelphia Dumpster Divers: Still Upcycling After All These Years* exhibition at the Chester County Art Association's Allinson Gallery, West Chester, PA, March 9 - 28. [Simone spicer](#)

Kathleen Studebaker's 2-person show, *Constructed/Inspirations* was at City Arts Salon, Philadelphia, PA, May 6 - 21. Her work was included in the online show *Robots, Rockets, and Space* at Not Real Art, Los Angeles, CA, June 2-30. This was a juried show selected from people who had applied for the NotRealArt grant. She had work in *Small Favors 2023*, a juried show at The Clay Studio, Philadelphia, PA, April 29 - July 2. Her 3-person invitational show, *Piece by Piece*, was at Cerulean Arts, Philadelphia, PA, Sept 27 - Oct 22. Juried by Nefeteri Strickland, her work was included in *In the Umbra*, Chimaera Gallery, Philadelphia, PA, October 6 – 27. Her piece *SeedCircuit [1]* won 3rd place in the Sculpture category in *Art of the State 2023*, at The State Museum of Pennsylvania, Harrisburg PA, September 10, 2023 - January 7, 2024. [Kathleen Studebaker; FineArt](#)



**Kathleen Studebaker
AstroObject 2ax0**



**Shirley Wagner
Inner Journey**

Shirley Wagner was commissioned to create the 7' outdoor sculpture *Inner Journey* for a private home in Tucson, AZ. She is beginning production of a 12' sculpture for the new CardioVascular Center in Tucson, AZ. [Shirley Wagner Artist](#)

Paul Andrew Wandless was one of the demonstrating artists, along with James Watkins, at the 2023 NCECA conference, Cincinnati, OH, March 17. [2023 Demonstrating Artist | Paul Andrew Wandless | Show, Don't Tell \(youtube.com\)](#)



**Paul Wandless
NCECA conference demonstration**

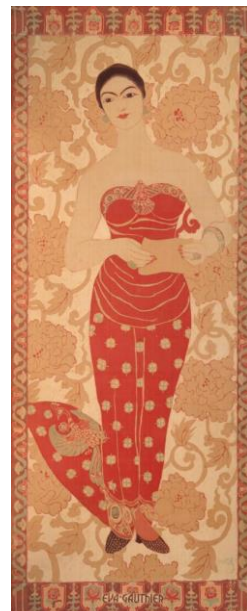
Ethel Wallace: Modern Rebel

Ethel Wallace at the Michener

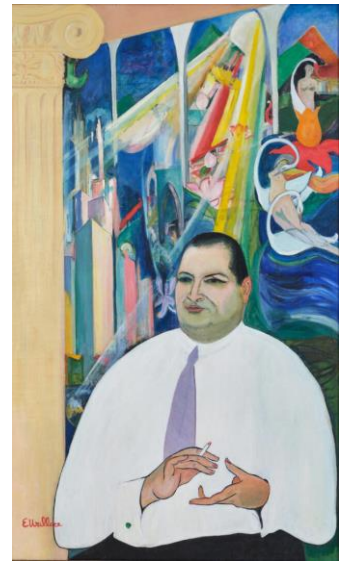
Ethel Walters (1886-1968) was a talented and courageous artist, a successful entrepreneur, and what some would refer to as a maverick. In the 1910s and '20s she built a thriving business as a fashion and textile designer, and as a batik artist, in New York City. She also created a rich and exciting life, immersing herself in the modern art world of the time and shunning domestic norms. The arrival of the Depression, and a fire in her studio, forced a move back to New Hope, where she spent the rest of her life making paintings. Although much of her work has been lost, this first solo show in a museum treats these extant pieces with great sensitivity, even using copies of her fabric designs as wallpaper behind her works.

Ethel Wallace: Modern Rebel is at the Michener Art Museum, Doylestown, PA, through March 10, 2024.

[Ethel Wallace: Modern Rebel – James A. Michener Art Museum](#)



Portrait of Eva Gauthier
1919, Batik on silk



Portrait of Joseph Stella
ca. 1920, Oil on canvas

Images courtesy of the Michener Art Museum

Between Horizons | 경계를 넘어서

Korean Ceramic Artists in America at The Clay Studio

The Philadelphia Museum of Art was not the only venue in 2023 with an exhibition of work by contemporary Korean artists. *Between Horizons, Korean Ceramic Artists in America* was at The Clay Studio from Oct 12th - Dec 31. If you missed this very strong show of sculpture by twelve talented artists, it's worth checking out the website.

[The Clay Studio | Between Horizons | 경계를 넘어서](#)



김아롱 Ahrong Kim
Ebb & Flow



최수진 Soojin Choi
Don't Forget About Me



박경민 Kyungmin Park
My Name is Gina Park

And if you haven't been to the new Clay Studio building on North American Street, it's very much worth a visit. Ask at the front desk for a tour and see the spaces designed to be a clay artist's dream come true.

[The Clay Studio | Welcome to The Clay Studio](#)

Photos courtesy of The Clay Studio

RESOURCES LIST

Willard Brothers Woodcutters

300 Basin Rd, Trenton, NJ 08619
(609) 890-1990

This company is good for any kind of wood; they will cut and sand to size. Also good for bases and flitches. Their website states "Since 1978, we've been a trusted source for supplying the finest domestic and exotic lumber available to carpenters, cabinet makers, artisans, and hobbyists."

[HOME | WillardBrothers](#)

Independent Casting

3413 Melvale St., Phila, PA • 19134
Email: Cast@IndependentFoundry.com
Phone: 267 928-2068

Specializes in Lost Wax Casting, Sand Casting, Fabrication, Patination, Restoration, Mold Making and 3D Rendering

[Independent Casting | Fine Art & Fabrication \(independentfoundry.com\)](#)

ART Research Enterprises, Inc.

3050 Industry Drive, Lancaster, PA, 17603
Phone 717-290-1303

Casting, fabrication, conservation and restoration, professional paint services, project management/engineering , rapid prototyping/enlarging.

Their website states "Art Research Enterprises is an art casting and art fabrication company specializing in bronze, brass, stainless steel, aluminum casting and art fabrication of bronze, aluminum and stainless steel as well as the conservation and restoration of art and architectural objects."

[Home Page - A.R.T. Research \(thinksculpture.com\)](#)

A R J Custom Fabrication

151 Taylor Street, Trenton, NJ 08638
609-695-6227

www.arjcustomfabrications.com

Specializing in Stainless Steel

Anthony R. "Tony" Jones and Fred are the owners. Tony's daughter, Leanne, is his business and office manager.

Powtek Powder Coating

233 Dickinson St, Ewing, NJ 08638
609-394-6700

Philadelphia Sculptors *on Instagram*

Post your work on Instagram [@Philasculptors](#)! Philadelphia Sculptor's mission is to promote contemporary sculpture and find opportunities for artists in the Philadelphia region. #philasculptors Don't know how? Email your news, images, updates & exhibition information to philasculptorsinstagram@gmail.com and we will do it for you. Let the rest of the world see what you've been doing!

Schlock For Brains

Poor me, and my not so snappy synapses. The flashlight might be in the freezer. Tools have left home on the hood of the car. My gloves can be found anywhere on the planet except my hands. But while my synapses are slacking off, the part of my brain that is working just fine is the amygdala - to be precise, my TWO amygdalae - since my anxiety levels are rising exponentially with every passing day. It's not only war, war, war, war.....it is also because, at this time next year, it's quite possible that we here in the US of A will be living in a dictatorship.

There's an artist I think about often. He paints portraits of wounded US veterans, and his name is George W. Bush. He's actually a pretty good painter and it's a shame he didn't decide to take that path as a young man, because many of these veterans were maimed or traumatized due to decisions he made. I wonder if the paintings are a form of penance – it must cross his mind that these folks and their families continue to suffer greatly because of the lies his administration persisted in fostering; that Saddam Hussein was behind 9/11 and harbored “weapons of mass destruction”.

Now there is someone vying to be our next president who is a BS Artist Extraordinaire. I wonder what Hieronymus Bosch type hellscapes he will paint for us if he attains his goal. Of course, this is metaphorically speaking – the guy is not a painter unless you count throwing ketchup against the wall. And remorse will never be anywhere on his palate.

Amidst all the lost gloves and missing tools, my synapses greatly struggle to understand the synapses of the people who vote for this person despite the many, many, many awful things he's done. Granted, they like some of the awful things he's done. But I posit that if President Obama did 0.001% of the same awful things, well....I shudder to think of his fate.

What I believe the synapses of the BS Artist's supporters fail to process is that he will promise to protect them from “the other” until, gradually, many of them will be living in real – not manufactured - fear, too. A very good lesson on the way these things can go is the 2017 film *The Death of Stalin*. While Stalin got to die peacefully (sort of) in bed, he sent millions to an early death because..... well, because he wanted to and because he could. His loyalists didn't particularly fare any better; some had their synapses taken outside and splattered against the wall. To think that these sorts of things could never happen here is to guzzle down a fruity concoction consisting of willful blindness and bunkum.

Here's hoping that in twelve months' time we will be painting a picture of peace and justice, with dignity and prosperity for all, where no one need live in fear, and both my amygdalae can get a rest. *And* that the only thing missing in our GREAT democracy are my gloves. I'll drink to that!

Member Benefits

Here are just a few of the PS member benefits:

Free Page in the Online PS Member Gallery!

Take advantage of this great opportunity to showcase your work and let curators and clients find you. **PS Members have received commissions because their art was on our web site!**

Eligibility - all current PS members are eligible to get their own page in our Member Gallery. To make sure your dues are current, check with Membership Chair Katlyn Pickel at katlynpickel@gmail.com

Check out our simple instructions to get your work on our site at: <https://philasculptors.org/member-gallery#member-gallery-submissions>

Discounted Membership to International Sculpture Center

When you join or renew your ISC membership (www.sculpture.org), under Membership/Subscriber Information, scroll down to “Affiliated Sculpture Group List” and check “Philadelphia Sculptors” to get your \$15 discount.

Contact Us

President - Leslie Kaufman
lesliekaufman@verizon.net

Vice President - Elaine Crivelli
elaine.crivelli@gmail.com

Secretary and Contributing Newsletter Editor - Holly Smith
h.smith007@comcast.net

Katlyn Pickel– Membership Coordinator
katlynpickel@gmail.com

Please keep your contact information current; send any changes to Katlyn Pickel.

ISC Membership Discount

Go to [International Sculpture Center Member Benefits](#) and check the "Philadelphia Sculptors" box under "Affiliated Sculpture Group List" to get \$15 off the basic membership rate.